

LEADERSHIP ROLE VISION LEAD  
INNOVATION VALUES TEAMWORK  
RESPONSIBILITY HEAD EMPATHY  
GUIDANCE COLLABORATION

DRIVE PASSION  
SUPERIORITY DIRECTORSHIP  
OFFICERS MOTIVATION  
SKILL EMPOWER

ETHICS  
IDEATION  
GOAL

PERSEVERE EXECUTIVE HEAD  
DRIVE CONTROL  
EMPATHY

COMMUNICATE  
PROVIDE GUIDANCE  
CHARGE CONTROL  
LEAD  
ROLE INITIATIVE

TEAMWORK PASSION  
LOYALTY TRUST  
ROLE LISTEN  
HEAD FRONT RUNNER  
LEAD

INNOVATION  
COMMITMENT LEADER  
PASSION CULTURE DECISIONS  
INTEGRITY INFLUENCE

LEAD SKILL  
DIRECTORS ROLE  
EXECUTE  
AUTHORITY

CONTROL COMMITMENT  
ORANIZATION ROLE  
DELEGATE EXECUTIVE  
JURISDICTION DRIVE  
ACCOUNTABILITY

LEADERSHIP INFLUENCE  
PERSEVERE DISCIPLINE  
MARKET FACILITATOR  
LEADING MANAGEMENT  
AGILE PROACTIVE IDEATION

INSPIRE  
CHARGE MOTIVATE  
DRIVE EXECUTIVE  
EMPOWER  
LEAD ENGAGE  
FRONT RUNNER  
LEAD GUIDANCE  
DISCIPLINE  
ACCOUNTABILITY  
OPPORTUNITY  
CHARGE MANAGEMENT  
EMPOWER LOYALTY

DELEGATE  
TRUST PERSEVERE  
WARMTH EXECUTIVE  
INDUSTRY PROVIDE  
LEADING GUIDANCE  
DRIVE CURIOUSITY LEAD  
ETHICS PROVIDE GUIDANCE  
POSITIVE ACTIVENESS

DRIVE PATH  
LEAD TO BE EXECUTIVE  
FOLLOWED IDEATION  
CHAIRMANSHIP HONESTY  
PROVIDE GUIDANCE  
LEAD MANAGEMENT  
CONTROL EXECUTIVE

PEOPLE LEAD  
DIRECTORS ROLE  
COMMITMENT  
CULTURE  
WARMTH DRIVE

CONFIDENCE  
ORANIZATION ROLE  
FEEDBACK WARMTH  
JURISDICTION  
ACTIVE KNOWLEDGE  
VISION

# Building the Future



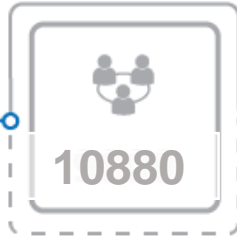
## OUR CREDENTIALS

CONTRACTOR



GREEN BUILDER

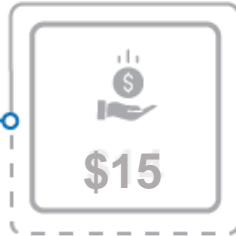
EMPLOYEES



YEARS



BILLION ANNUALLY



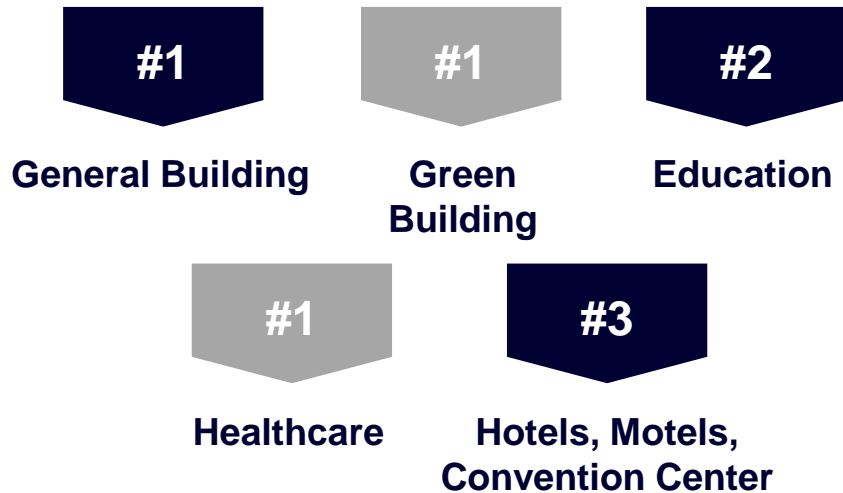
ANNUAL PROJECTS



## CORE VALUES



## ENR SURVEY DATA FOR 2021



## OUR PURPOSE

Make a Difference in the Lives of Our People, Customers and Community



## OUR VISION

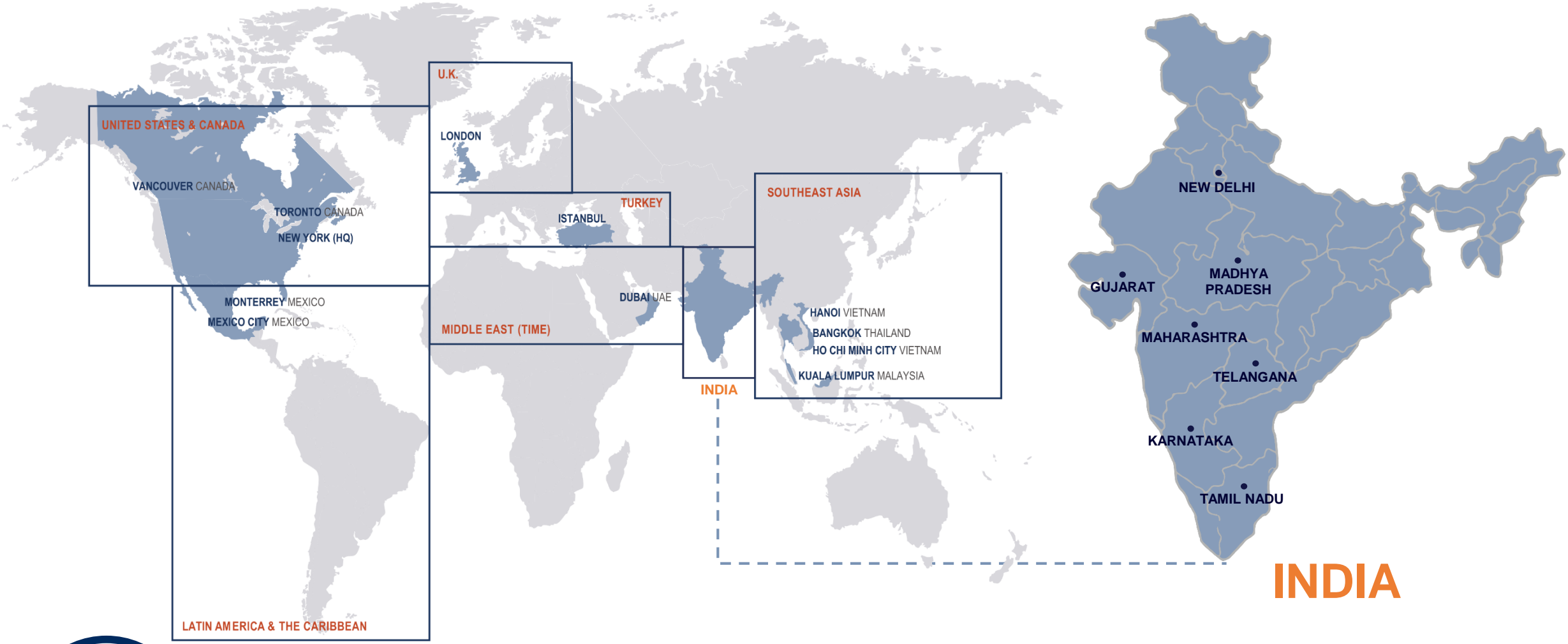
Be the highest provider of global construction services and technical expertise.

# Building L.I.F.E.<sup>®</sup>

Living Injury Free Every Day

# GLOBAL PRESENCE

Work experience in over 60 countries



**63%**

**Management Staff with International Experience**

# INDIA PROFILE

Our strength lies in our capability to offer **highly specialized services** that are a representation of our **global quality standards** and cognizance of the **local market nuances** which enable us to deliver projects with **remarkable proficiency and at optimum costs**.

## OUR PRESENCE

## TURNER TEAM INDIA



## PROJECTS STATS

Completed Projects

25 M sq.ft

Ongoing Projects

55 M sq.ft

## OUR LEADERS



**JAIRAM PANCH**

Managing Director



**ATUL SHIRKE**

Head – Business development & SPD



**CECIL SOLOMON**

Planning & Operations



**SHARIQUE KHAN**

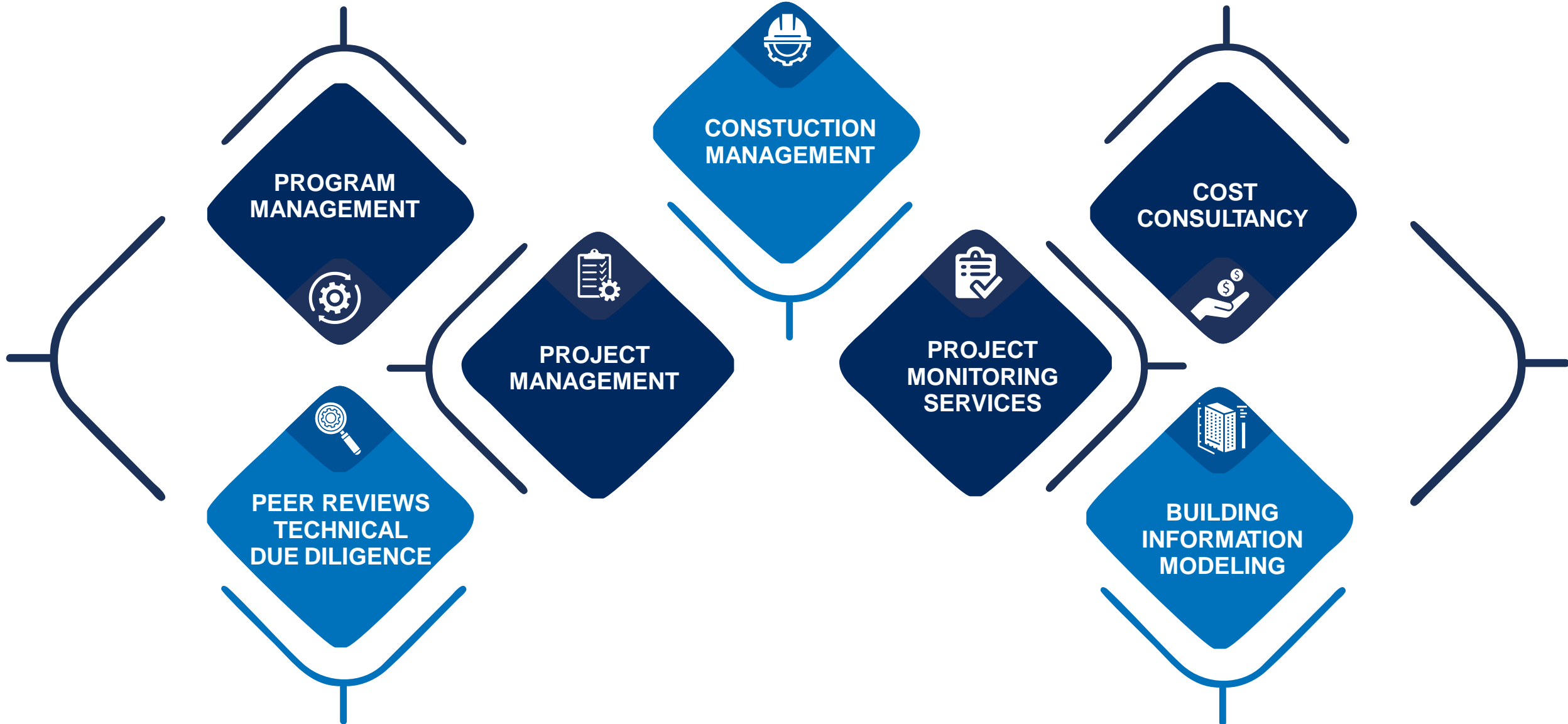
Operations - North



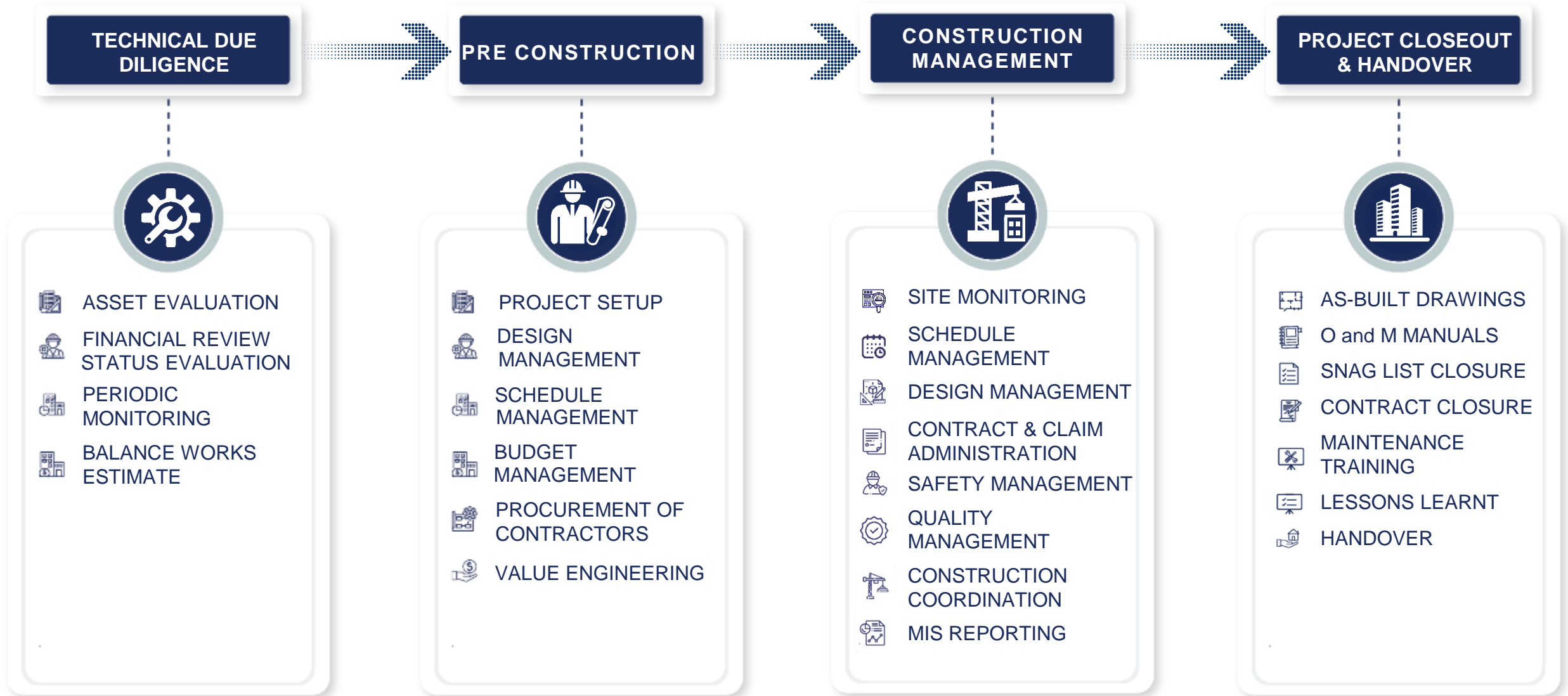
**SUNJAAY ATHANKI**

Head- TTS & Cost Consultancy

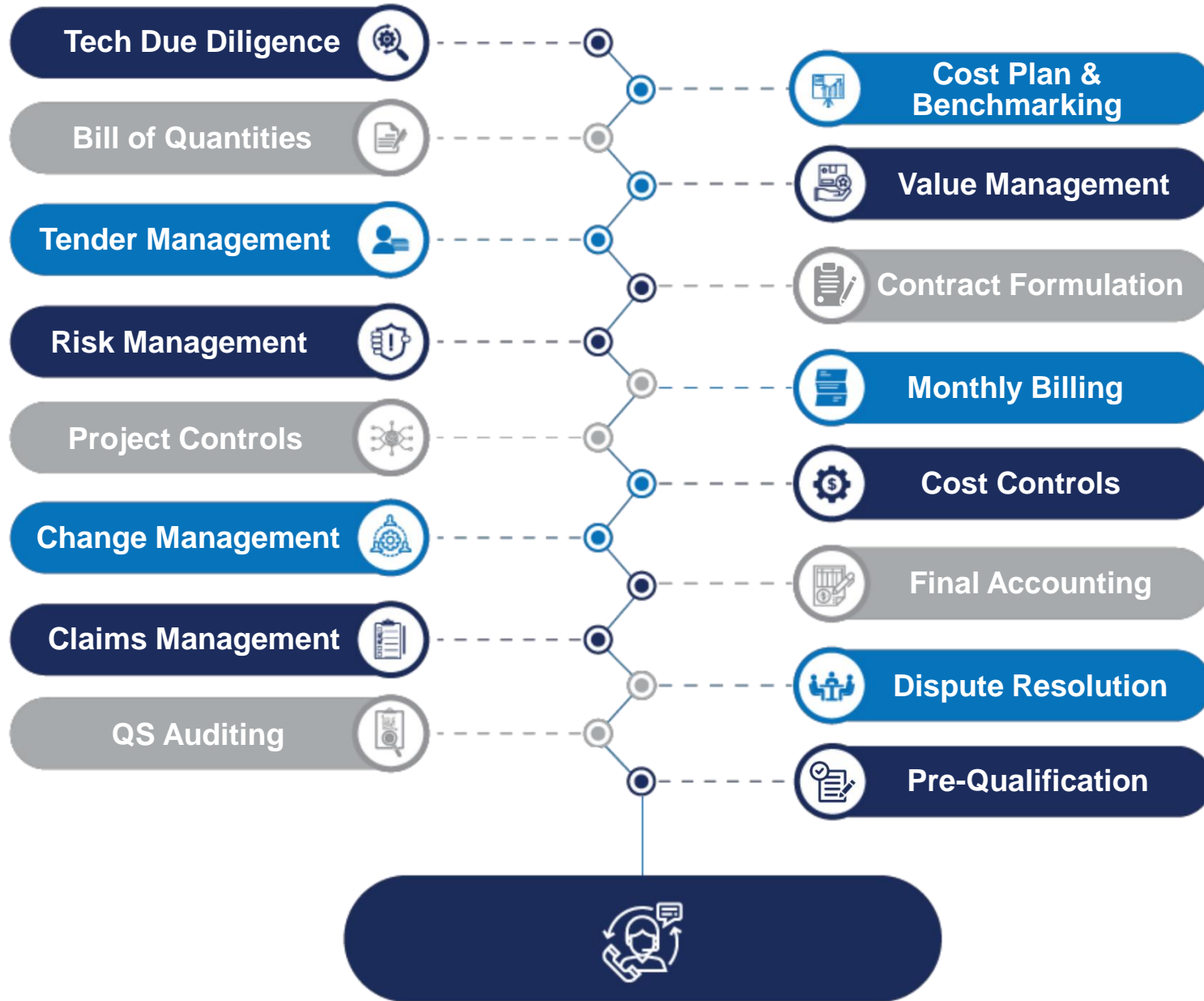




# SCOPE OF SERVICES



# COST CONSULTANCY SERVICES

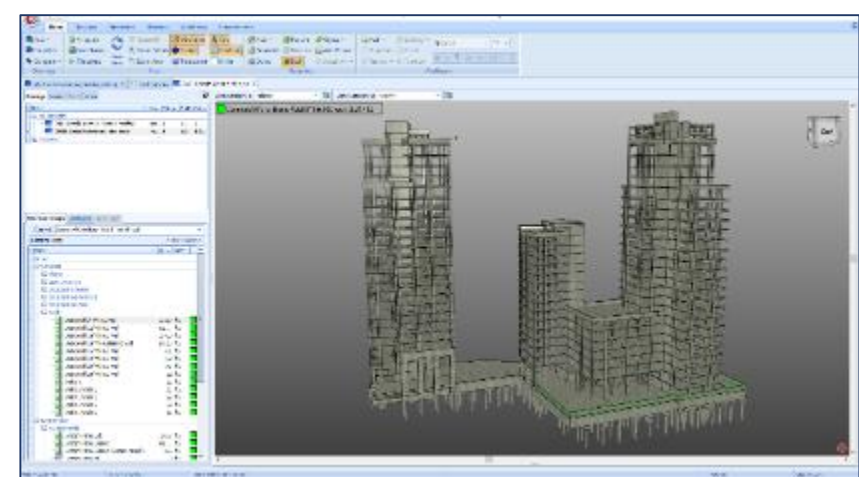
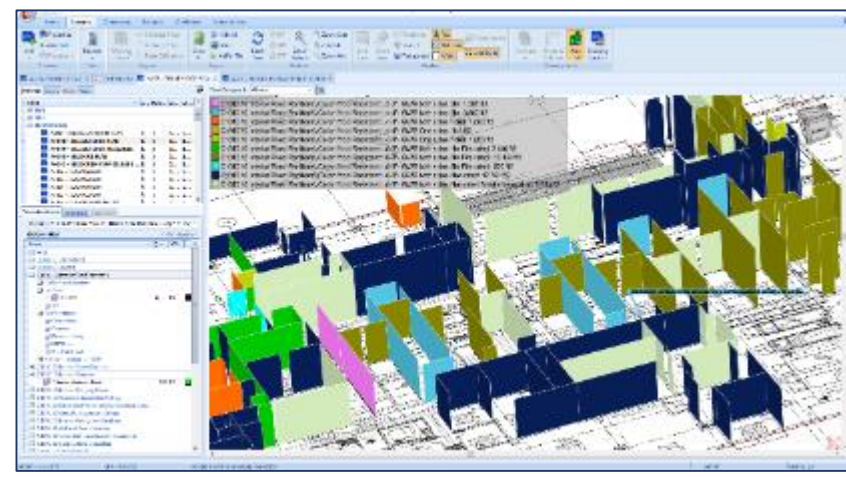
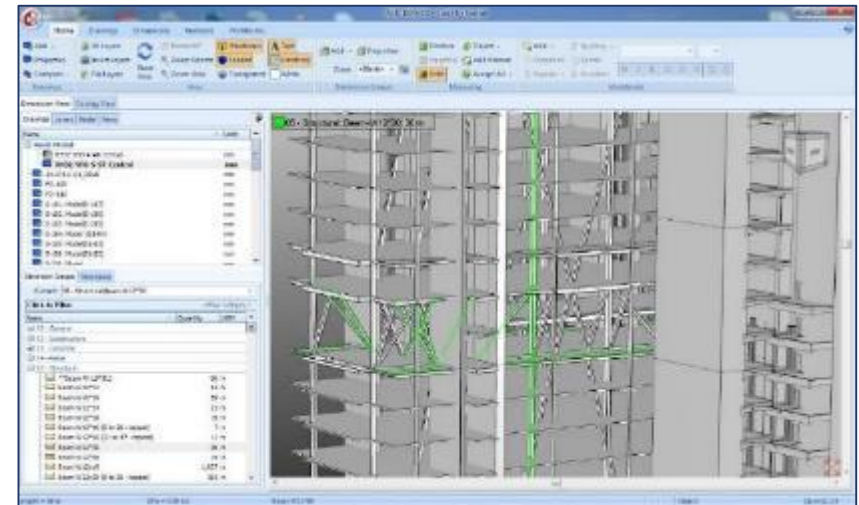
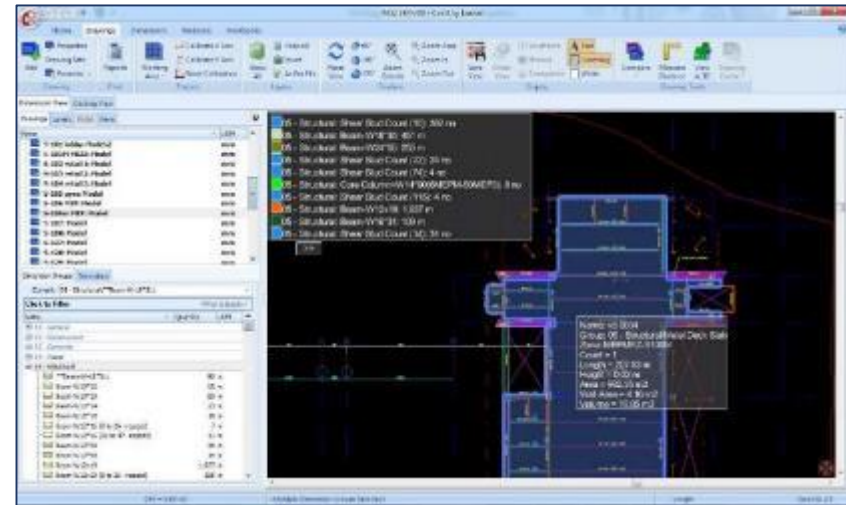


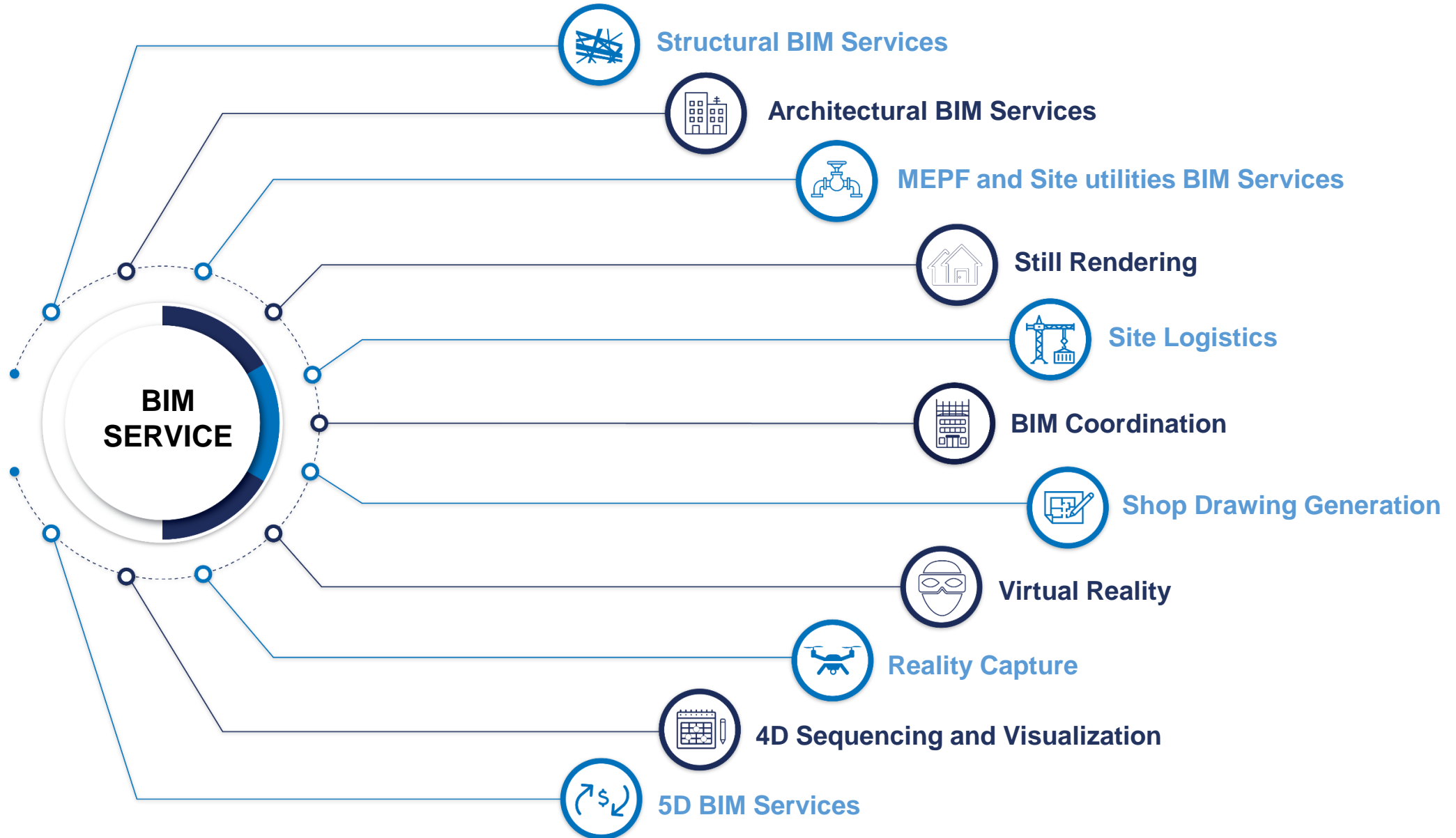
Our service portfolio includes all cost management services required at any stage of the project



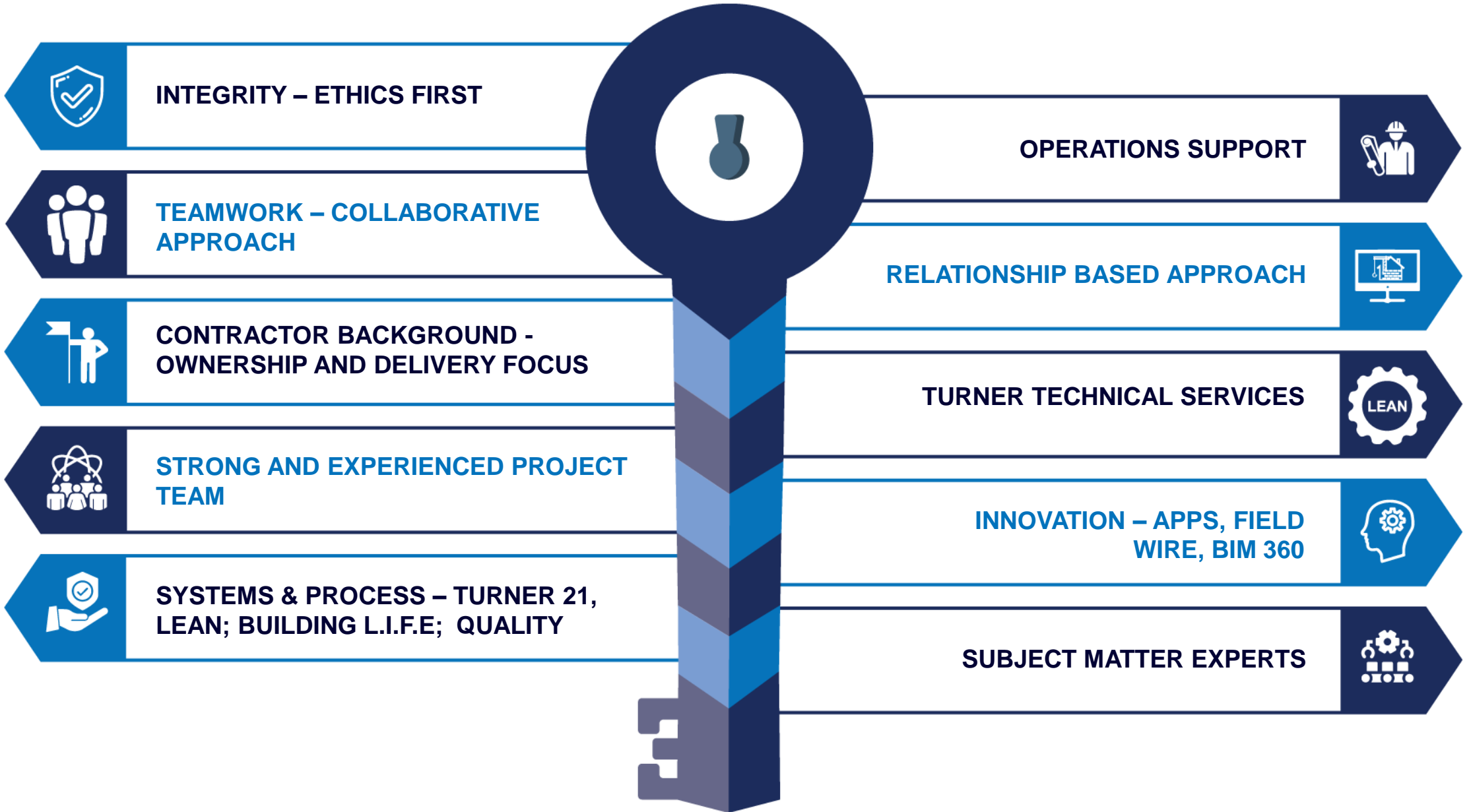
- ✓ Live linked Quantity Count
- ✓ Easy competitive among revisions
- ✓ Reduction in human error
- ✓ Prompt Evaluation of Design Differences
- ✓ Standardization
- ✓ Take off from 3D Model

## TOOL USED





# KEY DIFFERENTIATORS



# CLIENTS IN INDIA - PMC



# CLIENTS IN INDIA – COST CONSULTANCY





# TURNER 21

Standardized, Innovative, Best Practices & Effective Workflow

- 01 PROJECT ADMINISTRATION .....
- 02 PROGRAMME .....
- 03 BUDGET & COST .....
- 04 CONSULTANT MANAGEMENT .....
- 05 LOCAL AUTHORITY .....
- 06 DESIGN MANAGEMENT .....
- 07 CONSTRUCTION DRAWINGS .....
- 08 CONTRACTOR TENDERING .....
- 09 CONTRACT MANAGEMENT .....
- 10 BIM .....



- 11 SUSTAINABILITY .....
- 12 REQUEST FOR INFORMATION .....
- 13 SUBMITTALS .....
- 14 SAFETY .....
- 15 QUALITY .....
- 16 PROGRESS TRACKING & REPORTS .....
- 17 SITE LOGISTICS .....
- 18 LEAN .....
- 19 SITE PHOTOS .....
- 20 TESTING & COMMISSIONING .....
- 21 CLOSE OUT .....

## TOOLS USED

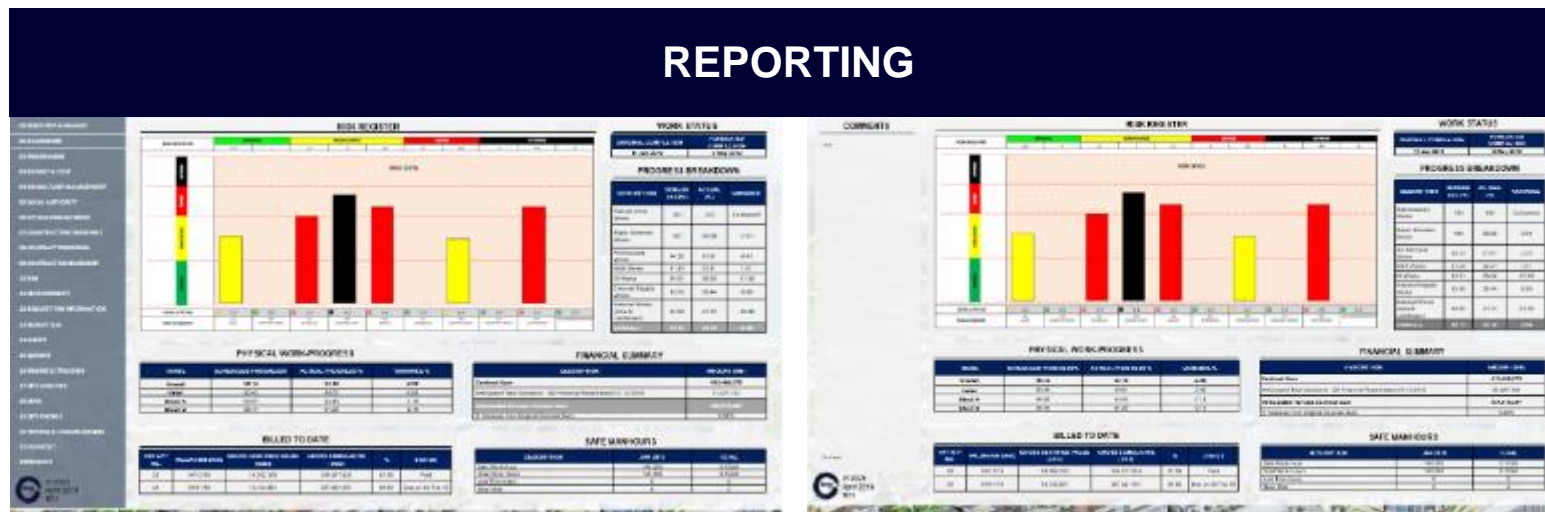
aconex

PROCORE®

FIELDWIRE

PlanGrid

Power BI

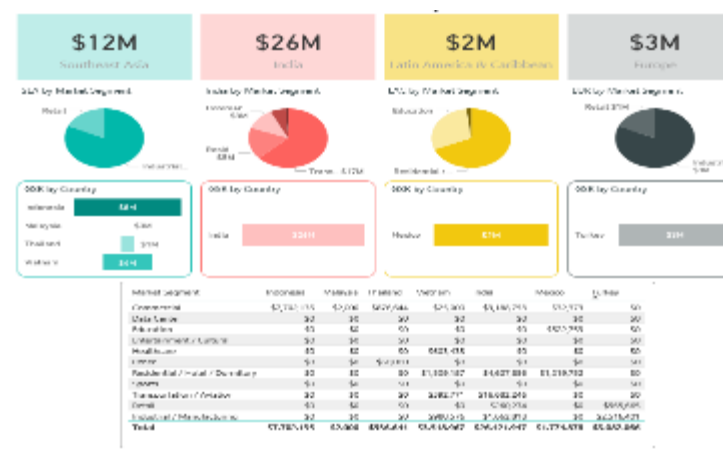


Monthly Dashboard - Turner 21

Weekly Dashboard - Turner 21



Customized Weekly Report - Turner 21



Power BI

## DASHBOARD REPORTING

7:26

Welcome to  
**BIAL Project Dashboard**

Search

**NSPR**

New South Parallel Runway Apr 19

**Terminal 2**

Terminal 2 Apr 19

**SAR**

Home Project Report Forecast Profile

7:25

**Terminal 2** Apr 19

Overview Progress Safety QA/QC Key Items

**Contract Completion** **Forecast Completion**

Planned Forecast

**Current Project Budget** **Project Cost at Completion**

Planned Forecast

**Billed to Date**

**Paid** 4% **Certified** 4%

Home Project Report Forecast Profile

7:25

**Terminal 2** Apr 19

Overview Progress Safety QA/QC Key Items

**Overall S-curve (Earned Value Progress)**

**Site Progress Photos**

Home Project Report Forecast Profile

7:25

**Terminal 2** Apr 19

Overview Progress Safety QA/QC Key Items

Open: 6	Open: 14
Closed: 0	Closed: 12

**Field Deficiency Report** **NCR's**

Open: 398	<b>200</b>
Closed: 1,687	

**Inspection Request** **Site Observation**

**Field Deficiency Report**

Home Project Report Forecast Profile

7:25

**Terminal 2** Apr 19

Overview Progress Safety QA/QC Key Items

On Track Delayed Need Intervention

**DGCA APPROVAL FOR T2 TERMINAL - PHASE-1**

BIAL safety team decided to submit the application before operationalization (By Dec'20)

**BCAS APPROVAL**

**AAI HEIGHT CLEARANCES**

**BIAAPA**

**GRAM PANCHAYAT**

**KSFES**

**EXECUTIVE COMMENTS**

Upon review of L&T's procurement of steel it was uncovered that for structural steel elements from Japan, they are delayed and will be delivered to factory by 15th July 2019. In discussions with L&T on how this will be resolved, L&T will provide a detailed report.

Home Project Report Forecast Profile



PROPERTIES IN INDIA

---



**Built-Up Area**  
**2.7 Million Sq. Ft.**

**Timelines**  
**2017-2022**

**BENGALURU INTERNATIONAL AIRPORT, BENGALURU (BIAL)**

**Project and Construction Management**



**Built-Up Area**  
**2.0 Million Sq. Ft.**

**Timelines**  
**2019-2023**

**DELHI INTERNATIONAL AIRPORT LIMITED (DIAL) PHASE 3A, DELHI**

**Project and Construction Management**



**AGASTYA CORPORATE PARK,  
MUMBAI**

**Project DeGround + tails 4-storey iconic commercial development**

**Built-Up Area 1.4 Million Sq. Ft.**

**Timelines 2015-2017**



**TISHMAN SPEYER PROPERTIES,  
HYDERABAD (WAVEROCK )**

**Project Details Mutli-level car parking+18 levels**

**Built-Up Area 2.5 Million Sq. Ft.**

**Timelines 2008-2010**



**PHOENIX - 285, PUPPALAGUDA,  
HYDERABAD**

**Built-Up Area: 1.4 Million Sq. Ft.**



**PHOENIX – AQUILA,  
HYDERABAD**

**Built-Up Area: 2.1 Million Sq. Ft.**



**PHOENIX - H09,  
HYDERABAD**

**Built-Up Area: 1.09 Million Sq. Ft.**

**Program Management**



**PHOENIX – CENTAURUS  
HYDERABAD**

**Built-Up Area: 2 Million Sq. Ft.**



**PHOENIX – B-HUB PHASE-1  
HYDERABAD**

**Built-Up Area: 2.5 Million Sq. Ft.**



**PHOENIX – H10  
HYDERABAD**

**Built-Up Area: 3 Million Sq. Ft.**

**Program Management**



**PHOENIX IVY, HYDERABAD**

**Built-Up Area: 0.4 Million Sq. Ft.**



**PHOENIX TRIVIUM, HYDERABAD**

**Built-Up Area: 1 Million Sq. Ft.**

**Program Management**



**PHOENIX HALCYON ETNA, HYDERABAD**

**Built-Up Area: 0.3 Million Sq. Ft.**

**PHOENIX HALCYON OLYMPUS, HYDERABAD**

**Built-Up Area: 0.3 Million Sq. Ft.**

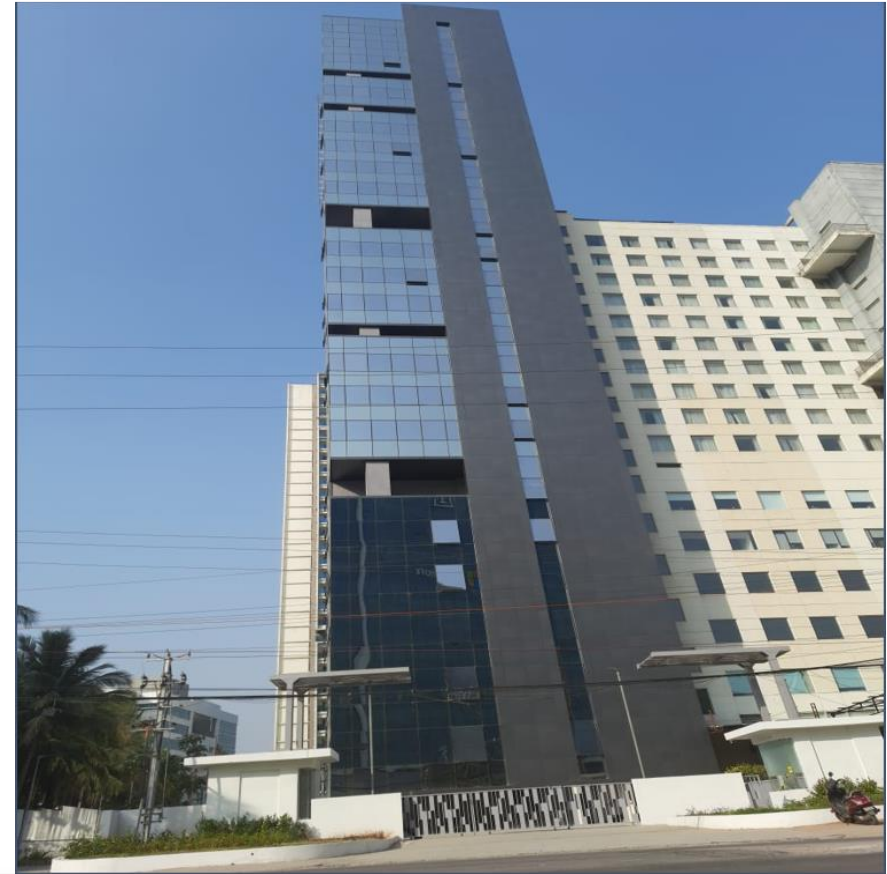
**Program Management**





**PHOENIX AQUILA TOWER B, HYDERABAD**

**Built-Up Area: 0.8 Million Sq. Ft.**



**PHOENIX GOLD EDGE COMMERCIAL, HYDERABAD**

**Built-Up Area: 0.3 Million Sq. Ft.**

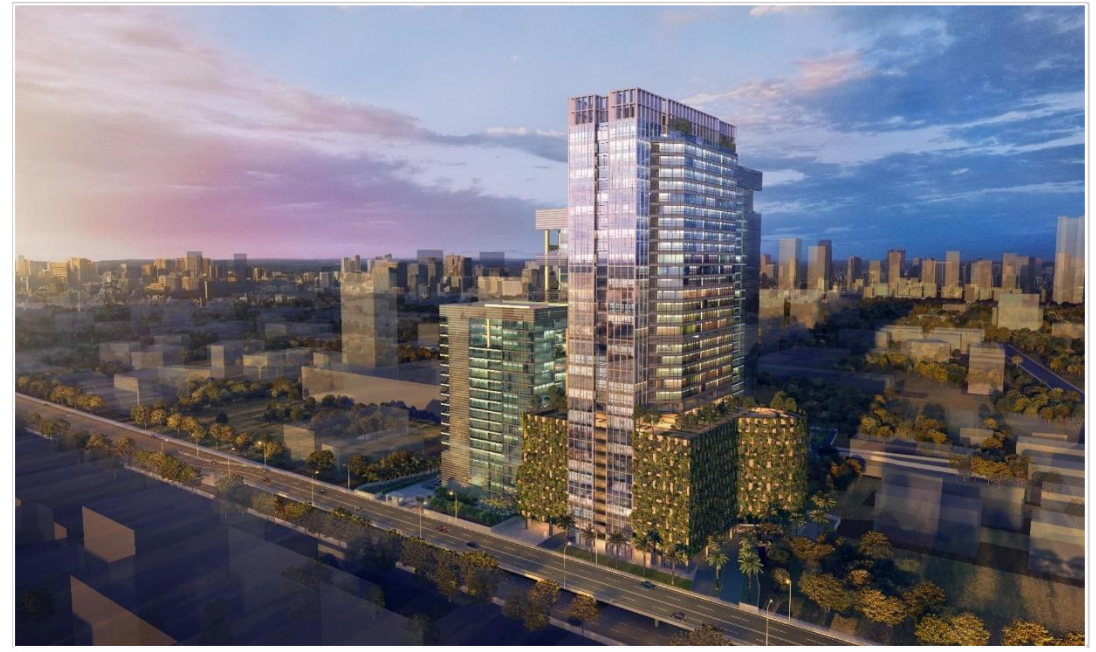
**Program Management**



**PHOENIX LITHOP, HYDERABAD**

**Built-Up Area: 8,00,000 Sq. Ft.**

**Project Management Consultancy**



**ONE INTERNATIONAL CENTER, TOWER – 4, MUMBAI**

**Built-Up Area: 8,89,000 Sq. Ft.**

**Technical Due Diligence and Project Management Consultancy**



**ATRIUM PLACE, GURGAON**

**Built-Up Area: 4.4 Million sq.ft**



**PHOENIX RISE, MUMBAI**

**Built-Up Area: 1.8 Million Sq. Ft.**

**Project Management Consultancy Services**



**RMZ ONE PARAMOUNT 2, CHENNAI**

**Built-Up Area: 2.9 Million Sq. Ft.**



**RMZ EcoWorld 20, BANGALORE**

**Built-Up Area: 2.16 Million Sq. Ft.**

**Project Management Consultancy Services**



## HIRANANDANI FORTUNE CITY, PANVEL

### Project Details

Ground plus 33-storey towers with 3 podium levels and stilt

### Built-Up Area

2.7 Million Sq. Ft.

### Timelines

2016-2022



## BIRLA VANYA, KALYAN

### Project Details

Residential towers of 32 storey with 6 podium

### Built-Up Area

2.08 Million Sq. Ft.

### Timelines

2018-2022



## DLF CAPITAL GREENS, DELHI

### Project Details

23 residential towers plus 5 EWS housing blocks

### Built-Up Area

8 Million Sq. Ft.

### Timelines

2012-2017



## PIRAMAL VAIKUNTH, THANE

### Project Details

3 residential towers with 6 podium and two basement levels

### Built-Up Area

1.2 Million Sq. Ft.

### Timelines

2015-2019



## HIRANANDANI PALACE GARDEN, CHENNAI, (HIRCO, PLC)

### Project Details

A 500-acre mixed-use development, is located outside the city of Chennai and is partially positioned in a Special Economic Zone (SEZ)

### Built-Up Area

5.0 Million Sq. Ft.

### Timelines

2008



## DFM ROSHANARA RESIDENTIAL DEVELOPMENT, DELHI

### Project Details

3 residential buildings with 2 sale buildings

### Built-Up Area

1.15 Million Sq. Ft.

### Timelines

2017-2023



## AHUJA TOWERS, PRABHADEVI

### Project Details

12 podium and four basement levels  
and 53 residential floors

### Built-Up Area

0.8 Million Sq. Ft.

### Timelines

2011-2016



## ISLAND CITY CENTRE, DADAR

### Project Details

3 basements, 1 podium and 53 & 60  
residential floors

### Built-Up Area

2.7 Million Sq. Ft.

### Timelines

2015-2018



## MINERVA TOWERS, MAHALAKSHMI

### Project Details

4 basements, 16 podiums and 63  
residential floors

### Built-Up Area

2.2 Million Sq. Ft.

### Timelines

2017-2019



**CPIIB STUDENT HOUSING PROJECTS, PAN INDIA**

**Built-Up Area: 3,248,500 Sq. Ft.**

**Technical Due Diligence**



**BIRLA NIYAARA, WORLI, MUMBAI**

**Built-Up Area: 4 Million Sq. Ft.**

**Project Management Services**





## BIRLA ALOKYA, BENGALURU

### Project Details

165 villaments comprising of combined basement and 3 habitable levels

### Built-Up Area

6.5 Lakh Sq. Ft.

### Timelines

2019-2022



## BIRLA MAGADI, BENGALURU

### Project Details

1 Basement , Ground and 31 super structure levels

### Built-Up Area

1.0 Million Sq. Ft.

### Timelines

2022-2024



## EMAAR EMD 65, GURUGRAM

### Project Details

Stilt and 30 super structure levels

### Built-Up Area

0.8 Million Sq. Ft.

### Timelines

2022-2027



**PHOENIX MALL DEVELOPMENT, PUNE**

**Built-Up Area: 1.9 Million Sq. Ft.**



**PHOENIX MALL, BENGALURU**

**Built-Up Area: 1.3 Million Sq. Ft.**



**LAKESHORE AIRIA MALL, GURUGRAM**

**Built-Up Area: 0.7 Million Sq. Ft.**

**Project Monitoring Services**



**DLF MALL OF INDIA**

**Built-Up Area: 1.8 Million Sq. Ft.**

**Project & Construction Management Services**



**PHOENIX MARKET CITY, INDORE**

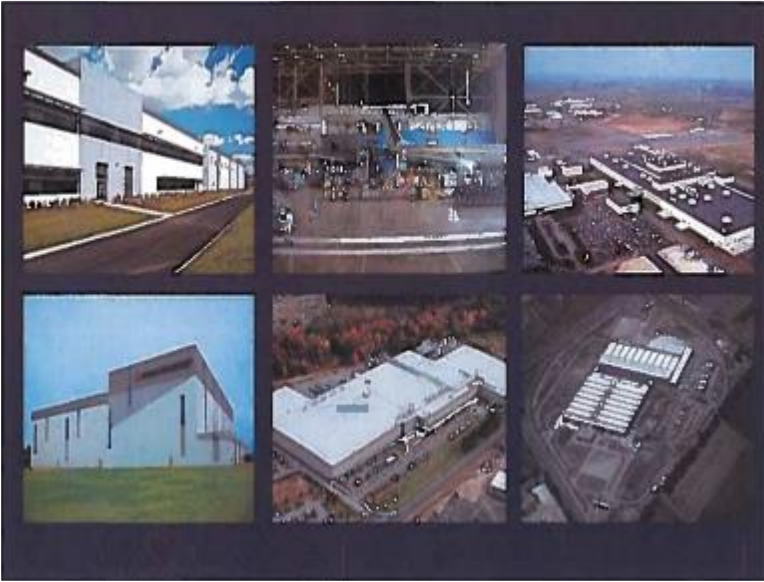
**Built-Up Area: 1.85 Million Sq. Ft.**



**CONFIDENTIAL MALL, HYDERABAD**

**Built-Up Area: 1.6 Million Sq. Ft.**

**Cost Management Services**



## CPPIB (DELHI NCR REGION, MUMBAI, PUNE, BANGALORE and CHENNAI)

### Project Details

Technical Due Diligence on warehouse facility

### Built-Up Area

14 Million Sq. Ft

### Timelines

2016

## CPPIB (LUHARI, HARYANA)

### Project Details

Technical due diligence of industrial and warehouse park of 5 buildings

### Built-Up Area

0.6 Million Sq. Ft.

### Timelines

2018

## CPPIB ORAGADAM, CHENNAI

### Project Details

Technical due diligence of warehouse facility

### Built-Up Area

0.76 Million Sq. Ft.

### Timelines

2019



**INDOSPACE - EMBASSY INDUSTRIAL PARK,  
FARUKHNAGAR**

**Built-Up Area: 28,76,478 Sq. Ft.**

**Technical Due Diligence**



**XANDER FUNDS - RENAISSANCE INDUSTRIAL PVT. LTD.,  
MUMBAI**

**Built-Up Area: 700,000 Sq. Ft.**

**Project Monitoring Services**



## CPPIB ORAGADAM, CHENNAI

Project Details Technical due diligence of warehouse facility

Built-Up Area 2,77,700 Sq. Ft.

## Technical Due Diligence



**STATUE OF UNITY, GUJARAT**



**Project Details**

**Sardar Patel Statue (182 metres),  
Hotel and Convention Center,  
Memorial Garden,  
Visitor Center Building**

**Built-Up Area**

**0.5 Million Sq. Ft.**

**Timelines**

**2012-2018**

**Design, Engineering, End to End Project and Construction Management including Cost Consultancy**

**STATUE OF UNITY, GUJARAT : PROGRESS TIMELINE (2018)**







**NATIONAL WAR MEMORIAL**



राष्ट्रीय समर स्मारक  
National War Memorial  
India Gate, New Delhi

**Client:**  
**Ministry of Defence, India**

**Built-Up Area**  
**0.5 Million Sq. Ft.**

**Location**  
**Delhi**

**Design, Engineering, End to End Project and Construction Management including Cost Consultancy**



**Client:**  
**JKP Foundation Inc. (Non-Profit Organization)**

**Built-Up Area**  
**14,728 Sq. Mt.**

**Location**  
**Mangarh, Uttar Pradesh**

**HINDU HERITAGE EXPERIENCE CENTRE**

**Project Management Consultancy**



**KIRAN NADAR MUSEUM OF ARTS**

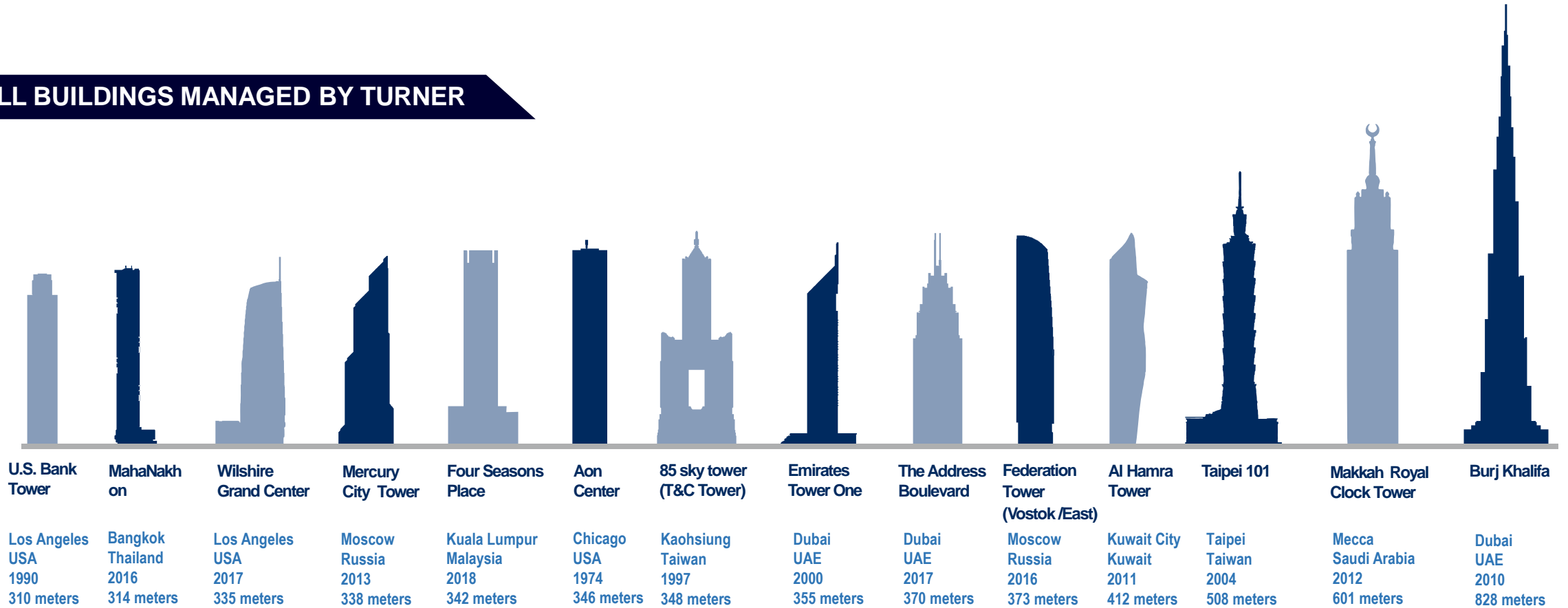
**Client:**  
**Vama Sundari Investments Private Limited**

**Built-Up Area**  
**1.155 Million sq.ft**

**Location**  
**Delhi**

**Project Management Consultancy**

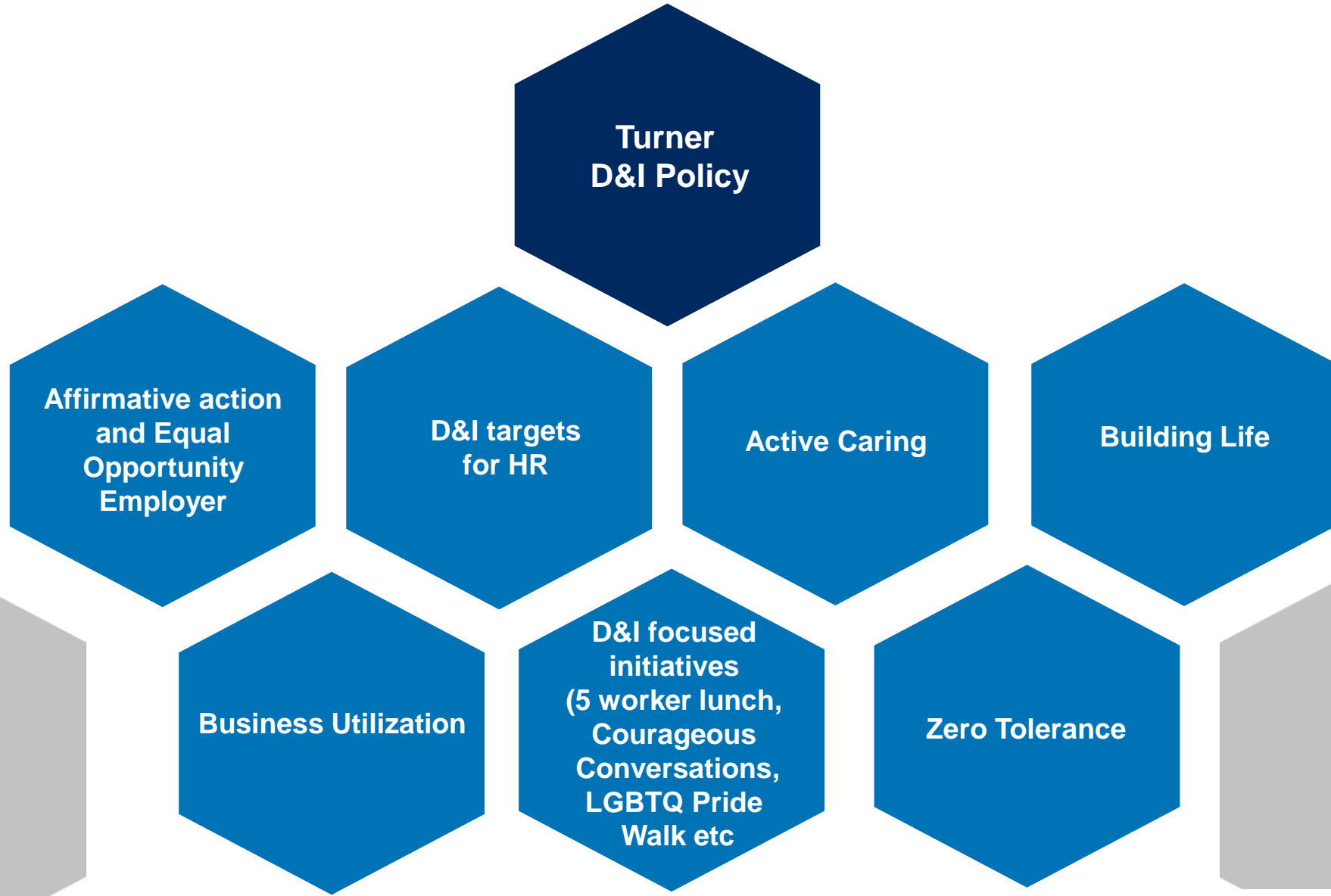
## TALL BUILDINGS MANAGED BY TURNER



## TURNER LEADS BY EXAMPLE

<p><b>13 YEARS</b></p> <p>As Engineering news-record Green Contractor, by project's #1 volume and accredited staff</p>	<p><b>1300+</b></p> <p>LEED Accredited professionals</p>	<p><b>7 COUNTRIES</b></p> <p>Have a Tallest building that was managed by Turner</p>
<p><b>1200+</b></p> <p>LEED Projects completed or under construction</p>	<p><b>3 OF 8</b></p> <p>500+ Meter Tall Buildings were managed by Turner</p>	<p><b>17 YEARS</b></p> <p>Turner projects have held the record: World's Tallest Building</p>

*We strive to recognize our similarities and celebrate our differences*



MANY VOICES. ONE BRAND. ONE COMPANY.

**Turner**

Service Quality Community Passionate Lean  
Safety Creative Sustainable Technolo  
Diverse Impressive Mentors Family Growth  
Teamwork Solutions Leaders  
Opportunity Respect Friends  
Partners Difference Builders Commitment People Value  
Global Trusted Tradition Dedication  
Inclusive Turner Innovative Learners Experienced

**Turner**





Building the future

---

THANK YOU

Contact:

Atul Shirke  
Head-Business Development  
Email: [ashirke@tcco.com](mailto:ashirke@tcco.com)